



# Owners Manual

For

## Vertical Boatlifts

**Model 1VBL4000120**

**Model 1VBL6000120**



Phone: 218-746-3734 Fax 218-746-3736  
1074 Dorado Drive N • Pillager, Minnesota, 56473

[WWW.RIDGELINEMFG.COM](http://WWW.RIDGELINEMFG.COM)

[INFO@RIDGELINEMFG.COM](mailto:INFO@RIDGELINEMFG.COM)

***\*IMPORTANT\****

Please read and understand the contents of this Owners manual before assembly or operation of your Ridgeline Boat lift. Be sure to always follow operating instructions and safety guidelines of all equipment.

Make sure you know the total weight of your watercraft including fuel and accessories. Exceeding the recommended capacity of your lift could result in damage to the lift and/or your watercraft.

Make sure no one is on your watercraft during operation of your lift. This additional weight can cause you to exceed the recommended capacity of your lift, resulting in damage to the watercraft, boat lift, or both.

**Failure to follow these instructions and recommendations outlined in this manual will void the factory warranty and may result in personal injury or death!**

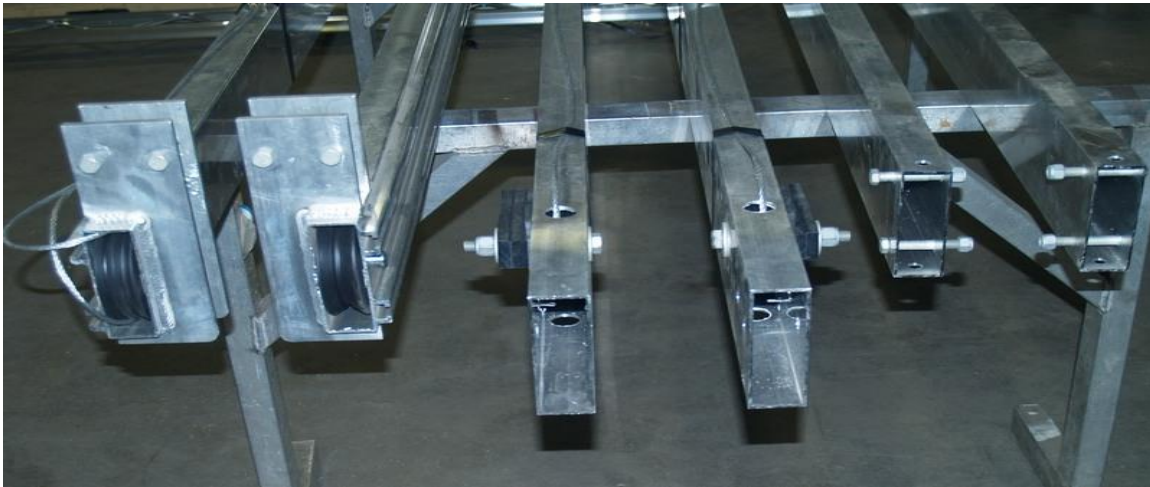
**\*\*\*WARNING\*\*\***

**Lift Safety Instructions**

- Read and understand all operating manuals for both the lift and the boat.
- Lift must be level to properly operate. (Check against water line)
- Position lift as close to dock as possible, for safety and ease of loading.
- Stop lowering the lift once boat is floating.
- Do not “free-spin” the boatlift wheel or try and stop the wheel if it “free-spins”.
- Do not reach through spokes of boatlift wheel ever.
- Inspect pulleys and cables periodically for wear. Replace excessively worn parts.
- Remove Drain plug from boat when not in use. Rain water buildup in boat could cause lift to become overloaded resulting in failure and/or personal injury.
- Do not play on or around the boatlift. Keep everyone clear during operation.
- Check all nuts and bolts, for proper tightness, before each use.
- Remove boat from the lift when doing any maintenance or moving of the boatlift.
- Electrical drive units must be installed by a certified electrician following all codes.
- Boat must be positioned upon the lift correctly or damage could happen.

## Assembly Instructions

For easy of assembly of your boatlift, lay out all materials in a level open area large enough to allow room for assembly. Placing all hardware and small items on a tarp or drop cloth helps to prevent accidental loss. Please follow each step to insure correct assembly of your lift. Proper assembly will ensure proper operation. Note that all z-cables have been strung through bed members and pull-up arms at the factory. The only cable needed to be run is the main winch cable, this can be done only after the lift is assembled and winch has been mounted.



**From Left to Right: (2) Bed members, (2) Pull-up arms, (2) Frame cross members shown.**



**Left and right side welded assemblies.**

## Step #1 Main Frame Assembly

Assemble the main boatlift frame by connecting the Left side assembly and the right side assembly with both of the frame cross members. Standup the left and right welded side assemblies parallel to each other about 10 feet apart with the **diagonal braces on the outsides**. Lay the frame cross members perpendicular between the side assemblies, near the outside ends forming a square frame . Remove the bolts from the frame cross members and bolt corners of the frames together as shown.



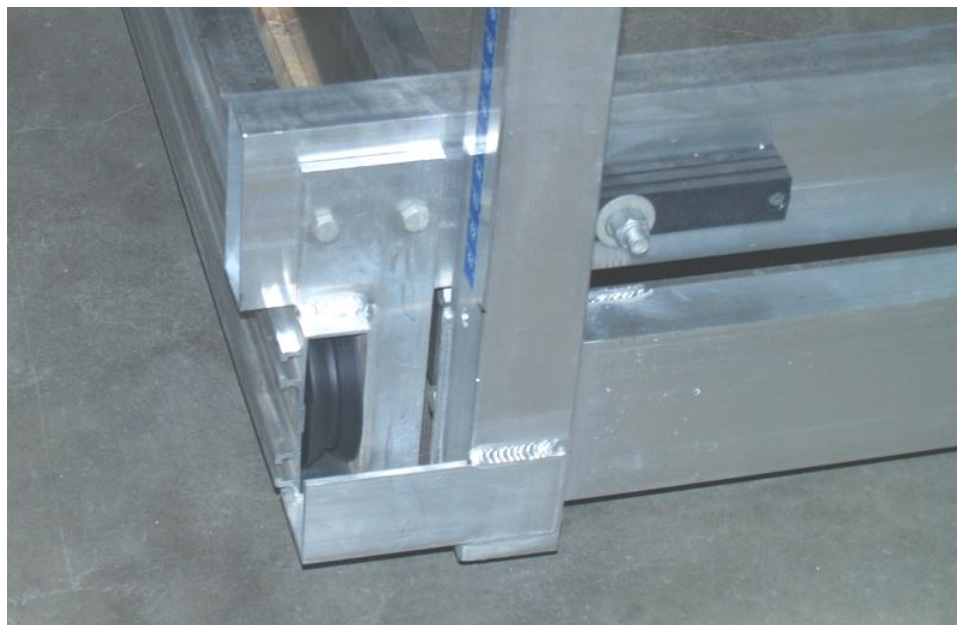
**Close-up of frame cross members bolted to welded side frames.**



**Assembled boatlift frame with cross members bolted in.**

## Step #2 – Bed Assembly.

Start with both bed members first. These members have 2 plates welded to each end and are 10 feet long. Place front bed member (no cable strung) between the side frame assemblies on the **winch post side (tallest post)**. Rest this piece parallel to cross member from above step just outside of frame with the double nut channel facing outwards. Place the rear bed member (has TWO cables) between the side frame assemblies on the opposite side of assembly, again just outside of cross member. Take the pull-up arms (ONE cable) and place them parallel to welded sides on top of the bed members and aligning between plates on the bed members as shown in 2nd picture below. Black plastic side should face outwards. Make sure that the cable coming out on top is located nearest the bed member with TWO cables!



**\*\*\*\*\*Make sure boatlift frame is square and level prior to tightening hardware.\*\*\*\*\***  
**Tightening the hardware is the last step of the frame assembly**

**Step #3 – Cable rigging, cables come pre-strung in bed members.**

Rear bed members first. The cables that come out over the TOP of the pulleys go down. The cable that comes out from the bottom of the pulleys go up. Always align cable with hole that gives you the straight vertical pull. Attach rear cables as shown below. One end of the cable is attached to the lower angle bracket while the other end is attached to the upper angle bracket on the opposite side of the lift. Cable ends secured to angle brackets by a 1/2" nut on top AND bottom

**Lubricate cables, pulleys and winch every spring and fall.**



**Cable comes over pulley and DOWN to angle bracket or under pulley and UP.**

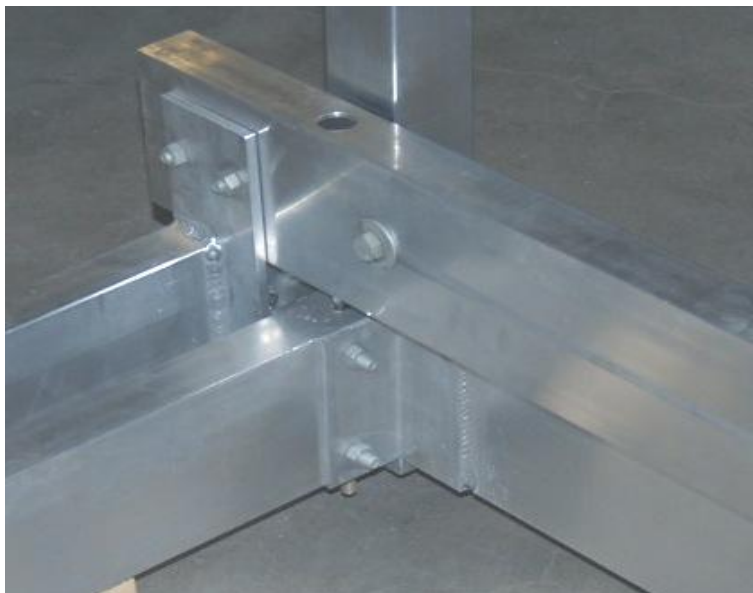


**Notice - Nuts stacked to ensure no cable slip**

Left and Right pull-up arm cable next. Each pull-up arm has only one cable. The cable coming out the top (nearest double cable bed member from step 2) will go up to mounting Bracket.



The cable coming out the bottom to the pull-up tube will pass completely through the 2"X6" frame cross member and be double nudded. There must be a 1/2" Fender washer between the double nuts and the 2"X6" frame tube.





Again, double check and make sure boatlift is completely level and no load is on boatlift, before adjusting any cables. Loosen all cables and much as possible while still remaining connected. Slowly tighten both ends of the cable, checking very often for slack in cable. Idea is to remove all slack from cable without tightening so much you are pulling posts inwards. A good way to tell is if you cannot pull slack through angle bracket, BY HAND, the cables are tight.

### **Step #4 – Manual Winch / Winch Cable assembly**

Attach winch to post if not already done. Remove the winch's top cover to access the top mounting hole. Bolt winch directly to mounting bracket supplied. Replace top cover, make sure metal ratchet stop has engaged the gear for proper operation. Slide mounting bracket assembly over winch post (tallest one) and tighten bolts once side holes in bracket align with top hole in winch post.

Attach threaded end of winch cable(only loose cable) to reinforced upper mounting bracket, this bracket has an extra triangular gusset weld in. Thread winch cable down and under both pulleys in bed member and up to winch, forming a rough U shaped with cable. Slowly rotate winch to align winch drum set screw with access hole in side of winch(see Below). Use an Allen wrench on the outside of the winch to loosen the drum center set screw. There are 2 center drum holes, of different sizes, so cable size determines which hole to use. Insert cable end and tighten set screw.



**Allen Wrench in Drum set screw**



**Cable inserted into Drum center hole**

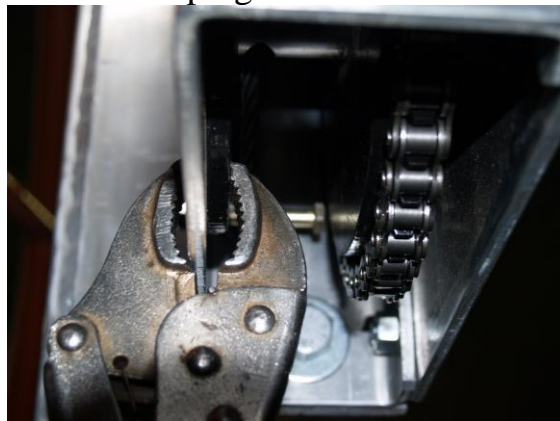
## Step #6 Installing Wheel

Remove bolt and washer from the spindle of the winch. Double check to make sure fiber washer is still on the spindle, as winch will not operate properly without this washer. **Do not remove this washer!** To prevent the winch from spinning while installing the boatlift wheel, clamp the drum and frame of winch together with a vise-grip as shown below. Spin boatlift wheel onto winch spindle by turning wheel clockwise until it stops.

**NOTE - Make sure the wheel is threaded all the way onto the winch shaft.**

Back wheel of a good quarter turn and install center locking bolt and washers.

Remove vise-grip. Remove any slack in winch cable by rotating the boatlift wheel clockwise while keeping some tension on the cable. NOTE ROTATION is correct!



see us on the Web at

**WWW.RidgelineMfg.COM**

Copyright 2019 Ridgeline Mfg. All rights reserved

### Boatlift installation guide

The following guidelines are designed to help you in installing your Ridgeline boatlift.

- Make sure you have plenty of help. Depending on the size of your lift, the more lifting and pulling power you have the better. If your lift does not already have one or more wheel kits, you might consider purchasing one from your local Ridgeline dealer. This makes the installation process much easier.
- Water depth is very important to the proper operation of your lift. Make sure the location of your lift is in at least 32" of water. If you are familiar with your lake try to anticipate the rise and fall of the water level and place your lift accordingly. Placing your lift in shallow water can damage your lift mechanism, your watercraft or both.
- Placing lift. First make sure you are familiar with the lock/unlock feature on adjustable legs. Make sure your legs are fully retracted into the lift. Carry or roll (if wheel kit is present) into the water.
- When you have reached the desired location, lift each corner of the lift and adjust the legs to the proper height. Each leg has a blue depth indicator to help you adjust the lift to a level position.

IMPORTANT! The water level should be within 1 inch or less on each blue ruler. Keeping the lift in a level position is key to proper and safe operation.

- Loading your watercraft. Before loading your watercraft check for proper up and down operation. Lower lift into the water, load watercraft slowly. After raising and lowering your watercraft check lift for settling and adjust if necessary.

**Tips:**

- Safety first. Let common sense prevail.
- Never leave your lift in the water over winter. Ice movement will cause damage.
- In the spring the water is cold. Consider using waders during install.
- If you have a canopy tarp install it last.
- Consider professional installation and removal. This service is usually available through your dealer

If you have any further questions please contact your dealer. If your issue can't be resolved with them, contact Ridgeline at 320-584-3734

**Thank you.**

## **Boatlift removal guide**

**The following guidelines are designed to help you in removing your Ridgeline boatlift.**

- Make sure you have plenty of help. Depending on the size of your lift the more lifting and pulling power you have the better. If your lift does not already have one or more wheel kits, you might consider purchasing one from your local Ridgeline dealer. This makes the removal process much easier.
- Preparing to remove your lift from the water. If you have a canopy/tarp, remove the tarp first. Fold it and store it in a dry well-ventilated area. Next remove your watercraft.
- Removing the lift. First make sure you are familiar with the lock/unlock feature on adjustable legs. Lift gently on a corner and unlock the leg and let it drop a few notches and then let it re-lock. Repeat this procedure on each corner, slowly letting the lift down to the bottom. Make sure your legs are fully retracted into the lift. Now you can gently carry or roll (if wheel kit is present) out of the water.
- Make sure your lift is placed on shore in a solid position away from the water line. Remember ice flow and movement can seriously damage your lift. Anchoring your lift to a tree or stake is also recommended in steep bank or unpredictable shorelines.

**Tips:**

- Safety first. Let common sense prevail.

- Never leave your lift in the water over winter. Ice movement will cause damage.
- In the spring the water is cold. Consider using waders during install.
- If you have a canopy tarp remove it first.
- Consider professional installation and removal. This service is available through your dealer.

## Boatlift and Dock FAQ's

(Frequently asked questions)

### Does my lift have to be level?

- Yes. Each lift has water level indicators on each of the four posts. The water level on each post should be within one inch of one another. If your lift is outside these parameters it could seriously affect the performance of your lift.

### How deep does the water have to be?

- We recommend a minimum of 32" of water depth for most lift models. This allows for most changes in water levels. Although in some cases the lift has to be moved into deeper water should the level drop below acceptable depth.

### Can I leave my lift or dock in the water during winter?

- No. This is not recommended practice. Temperature extremes in winter can cause ice to move do to the rise and fall of the water level in your lake or river. This can cause serious damage to your lift and dock. This type of damage will void the factory warranty.

### My new boat does not sit on the lift properly. What can I do?

- The support bunks on your lift are adjustable to fit most any watercraft. Consult your owner's manual for instructions.

### Can I move my lift from one side of my dock to the other?

- Yes. This requires the disassembly of your winch box and cable and transferring it to the other side. This is for cantilever lifts only. Something of this magnitude should be done by factory-trained technicians. Consult your dealer first before attempting this project. Vertical lifts must be rotated and moved to the other side of the dock.

### When I install or remove my dock should I remove all the decking?

- Yes. When installing or removing your dock having the panels removed keeps the weight down and allows for a much easier installation. During the off-season keep your panels stacked neatly and cover them if possible to prevent any damage.

### Can I pull out my lift or dock with a truck or 4-wheeler?

- Yes. This technique should be approached with great **caution** and care. This should only be attempted if you have enough wheels on your lift or dock to allow this action. You should attach the straps to the front two posts and proceed slowly. Make sure the lake bottom is clear of any obstructions. Also make sure the legs of the lift/dock are completely retracted before moving.

### What do I do with my canopy tarp in the off-season?

- Before storing your tarp, make sure it is clean and dry before folding and storing it in a dry, well ventilated area. Storing your tarp with trapped moisture or in a damp area will cause mold and mildew stains.

### How do I clean my tarp?

- Before storing your tarp for the season, clean with a damp sponge and mild non-abrasive cleaner. Let dry completely before storing.

### Do I have to perform any specific maintenance on my dock?

- No. Maintenance on your Ridgeline dock or lift is mainly preventative. Before every install and after every removal, inspect your lift or dock thoroughly. Check all welds, cables, nut/bolts, and connections. A shot of WD-40 into the winch every spring is also a good idea.

**What do I do if I have a problem with my lift or dock?**

- Consult the trouble-shooting page in your owner's manual first and if you cannot determine your problem, call your dealer. They should be able to help you diagnose what exactly is wrong and remedy the problem with the proper action.

**Can I add on to my dock at a later date?**

- Yes. You can purchase additional sections at any time and expand your dock to meet your needs. Just call your local dealer and let them know what you need.

**Can I add an electric winch unit to my lift at a later time?**

- Yes. There are a couple models available depending on your particular needs. Just contact your local dealer for more information.

If you have any other questions or need help with any of these, call your local dealer or Ridgeline at 320-584-6360.

Notes