



Owners Manual

For

Premium Dock



Phone: 218-746-3734 1074 Dorado Drive North • Pillager Minnesota, 56473

WWW.RIDGELINEMFG.COM

INFO@RIDGELINEMFG.COM

Please read and understand the contents of this Owners manual before assembly or operation of your Ridgeline dock. Be sure to always follow operating instructions and safety guidelines of all equipment.

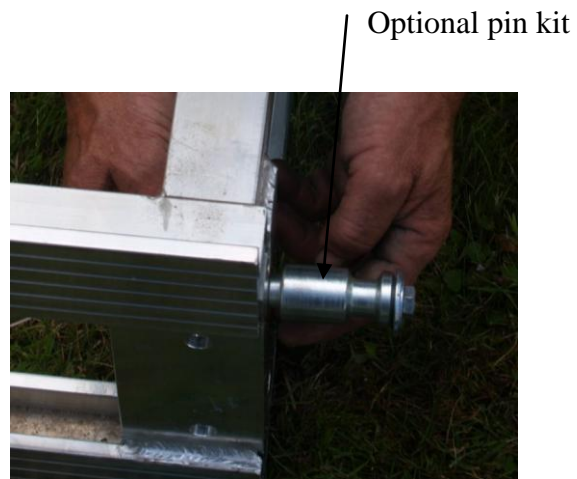
Failure to follow these instructions and recommendations outlined in this manual will void the factory warranty and may result in personal injury!

Assembly Instructions

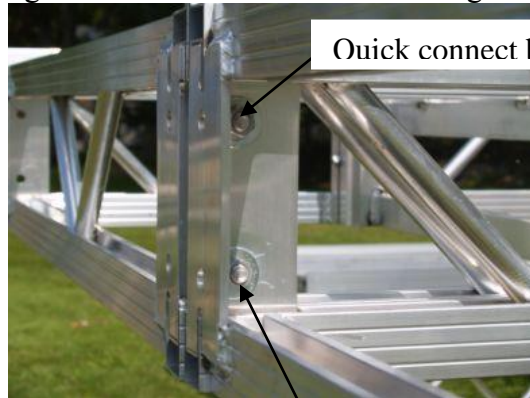
For easy in assembly of your dock, lay out all materials in a level open area large enough to allow room for assembly. Placing all hardware and small items on a tarp or drop cloth helps to prevent accidental loss. Please follow each step to insure correct assembly.

Step #1.

Insert the plastic strips into the leg pockets on 3 sides, adhere with double face tape. Do not install on the side that receives the jamb nut. This prevents metal on metal contact and allows for easy height adjustment of the dock legs .



Step #2 Layout the dock sections as they will be in the lake, including 45* and patio sections. Set the dock sections on blocking so they are off the ground. Bolt the sections together in manageable lengths so you can get them in the water. Install leg posts in the pockets. Install 1/2" square nut into nut channel. Install 1/2" bolt into square nut and align with hole(s) in leg pocket. Tighten 1/2" set screw to hold dock leg. Set all legs.



Bolt sections using 2 - 1/2"x 2" long bolts, nuts and flat washers.

Install 3/8" thick spacer between 45* and standard section of dock.



Install legs through pockets. Secure with 1/2" jamb nuts. Adjust height of legs so the dock will be out of the water. Fine tuning the height will be done once dock is installed.

Slide stabilizer section over leg and attach to the welded on pocket above using the flat bracket and jamb nuts. Square up legs with frame.



Attach 3/4" square stabilizer bar from the pocket you just previously added to the one on the opposite side and secure with jamb nut.

Welded in pocket, opposite side of dock.



Stabilizer Kit



Bolt on leg pad

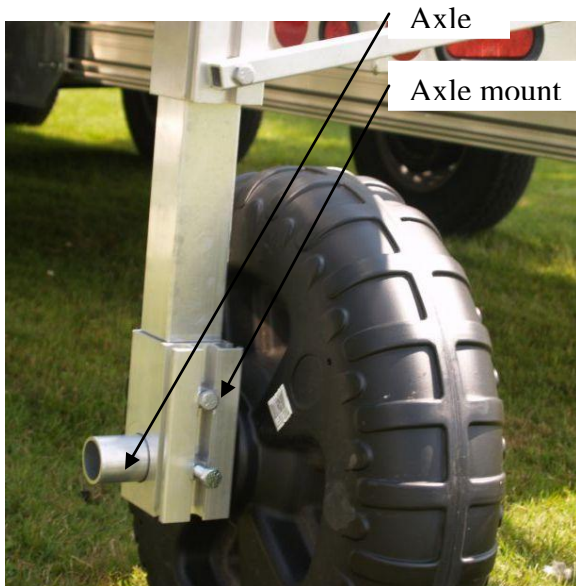


Wheel and axle kit

Stabilizer kit gets installed on the “deep water” end of the dock, additional stabilizer kits can be installed if required. As a general rule of thumb, wheel kits should be installed on the last dock section and then every other section, spaced evenly, to the shore section. This, of course, can vary for individual applications. Consult your dealer with any questions. Install the bottom leg pad on post and then insert them into the remaining dock pockets.

Step #3

Attach axle bracket to dock leg using top jamb nut as shown (bottom jamb nut is used to secure the axle). Make sure holes are orientated as shown to allow insertion of axle. Also, verify that dock leg does not protrude into axle hole.



Wheel kit assembly



Wheel and stabilizer kit

Wheels are designed so they can be rotated in 90* increments. This allows the user to orientate the tires so that they can protrude inside or outside the dock frame. We recommend inside the dock so they don't interfere with your watercraft or walking along the edge of your dock.

*****Optional Installation of the shore end wheel kit*****

On the first section (shore end) of dock, bolt on the optional shore end wheel kit (if purchased).



Thick washer

Standard washer



Wheel kit and ramp assembly Bracket



Axle tube



Shore end wheel

Step #4



Use winch kit to level dock



Roll dock sections into water and position as required. Drop down legs with pads and temporarily secure. Install winch kit and level dock. Retighten all jamb nuts and fasteners. Install ramp and decking. When installing decking, you may have to notch around the post.